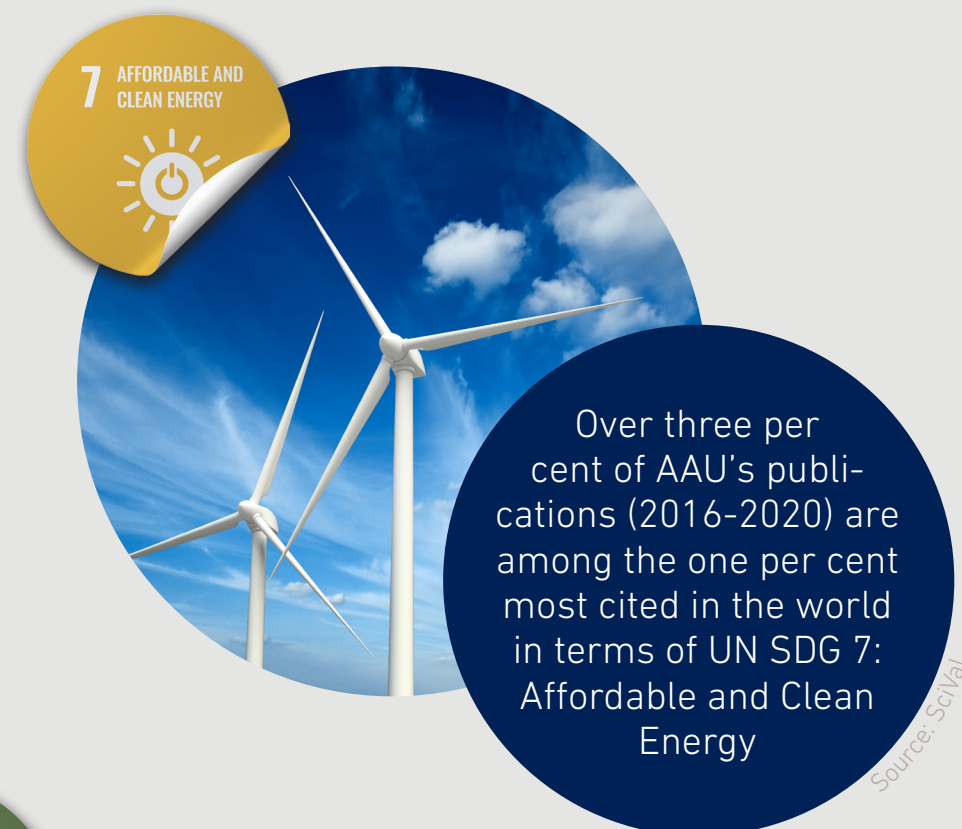


In 2021, collaboration on solving the challenges of climate change and Covid-19 has been in high demand. Researchers, students and administrative staff at AAU all take part in these efforts where AI plays an important role. AAU makes a difference: According to the UN SDG 7 Sustainable Energy and SDG 13 Climate Action, we are among the most cited universities in the world. Likewise, both the press and "alternative metrics" reflect a broad interest in the crucial work that takes place at AAU.



A horizontal bar chart comparing 'Open' (orange) and 'Closed' (blue) account percentages across three categories: Social Media, Captures, and Usage. The x-axis represents the percentage from 0.0 to 160.0. Social Media shows a high percentage of open accounts (~130%) and a very high percentage of closed accounts (~160%). Captures shows a moderate percentage of open accounts (~32%) and a lower percentage of closed accounts (~28%). Usage shows a high percentage of open accounts (~108%) and a moderate percentage of closed accounts (~58%).

Category	Open (%)	Closed (%)
Social Media	~130	~160
Captures	~32	~28
Usage	~108	~58

Source: Pure, PlumX

Danish press cuttings	Department	Mentions
Covid-restriktioner forlænges	DCM	140
Ekspert ikke i tvivl: Ministers lift af Hjemmeværnet er ulovligt	LAW	117
Forsker om strejkevarsel: Regeringen kan gøre forskellen	DPS	82
Smerter ved COVID-19 er fløjet under radaren	HST	78
Lektor om Netanyahus afgang: En revolution og et kæmpe skridt	DPS	75
Sygeplejerskers konflikt på vej til at blive historisk lang	DPS	72
Nu åbnes der for ansøgninger til Arne-pensionen	DPS	69
Antallet af indlagte er på sit laveste i fire måneder	HST/DCM	66
Delta øger risiko for indlæggelse	BIO	64
Ekspert dumper beregninger: Energiø kan udløse kæmpe milliardunderskud	AAUBS	64

Source: Pure

**Press Category**

- Opinion
- Research
- Knowledge collaboration
- Business cooperation
- General mention
- Debate
- Other

Press Category	Percentage
Opinion	45.69%
Research	22.71%
Knowledge collaboration	9.07%
Business cooperation	6.19%
General mention	6.1%
Debate	5.83%
Other	4.4%

Source: Pure (autumn 2021)

Source: Pure (autumn 2021)

Year	AAU (#)	KU (#)	DTU (#)	AU (#)	AAU (top 1%) (%)	KU (top 1%) (%)	DTU (top 1%) (%)	AU (top 1%) (%)
2016	45	190	130	170	1.5	4.0	3.0	2.5
2017	55	210	170	185	3.5	4.0	3.5	3.0
2018	45	195	190	190	4.5	7.5	3.5	5.5
2019	90	185	200	220	5.5	8.0	3.5	6.5
2020	85	225	195	260	7.5	5.5	3.0	4.5
2021	-	-	-	-	9.5	-	-	-

Year	PhD	Industrial PhD	Total
2020	175	15	190
2019	185	10	195
2018	165	25	190
2017	195	10	205
2016	285	15	300

Source: AAU PhD and Pure

**PhD** Source: AAU PhD and Pure

[illegible]

Source: Pure (abstracts and titles)

**SDG**

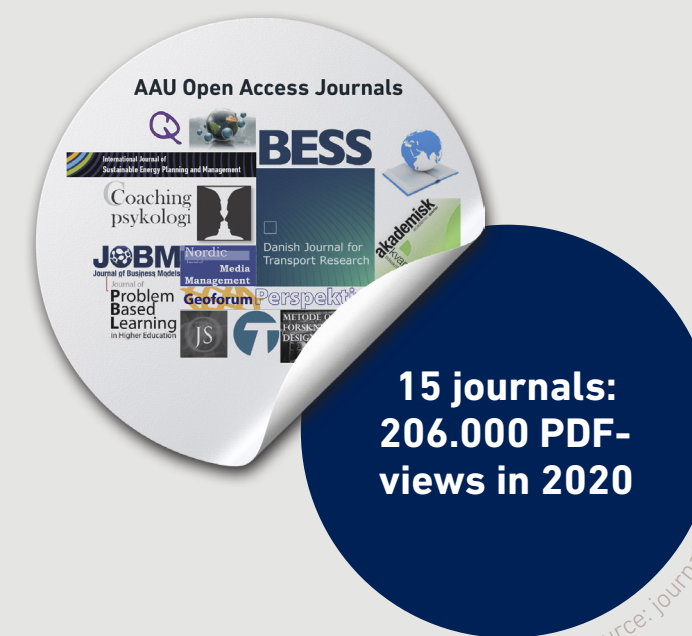
- SDG 1 - No Poverty
- SDG 2 - Zero Hunger
- SDG 3 - Good Health and Well-being
- SDG 4 - Quality Education
- SDG 5 - Gender Equality
- SDG 6 - Clean Water and Sanitation
- SDG 7 - Affordable and Clean Energy
- SDG 8 - Decent Work and Economic Growth
- SDG 9 - Industry, Innovation, and Infrastructure
- SDG 10 - Reduced Inequalities
- SDG 11 - Sustainable Cities and Communities
- SDG 12 - Responsible Consumption and Production
- SDG 13 - Climate Action
- SDG 14 - Life Below Water
- SDG 15 - Life on Land
- SDG 16 - Peace, Justice and Strong Institutions
- SDG 17 - Partnerships for the Goals

Source: Pure

Year	Female (BFI Points per FTE)	Male (BFI Points per FTE)
2016	0.8	1.4
2017	0.8	1.35
2018	0.8	1.55
2019	1.1	1.6
2020	1.5	1.65

Source: Pure, bfi.fi.d

Source: Pure, bfi.fi.dk



2020  
Source: journals.aau.dk

Bar chart showing the percentage of students who completed the course by the end of the semester for various courses in 2016, 2017, 2018, 2019, and 2020. The Y-axis represents the percentage of students (0% to 60%). The X-axis lists the courses: BIO, BUILD, CL, CREATE, CS, DCM, DCP, DPS, DS, HET, LAW, MATH, MP, PLAN, SOCSCI, AAU Energy, and AAUHS. The legend indicates the years: 2016 (blue), 2017 (orange), 2018 (yellow), 2019 (green), and 2020 (dark blue).

Course	2016	2017	2018	2019	2020
BIO	40%	45%	48%	50%	52%
BUILD	35%	30%	33%	35%	37%
CL	10%	10%	10%	10%	10%
CREATE	40%	40%	42%	45%	48%
CS	20%	20%	25%	28%	30%
DCM	15%	15%	15%	15%	15%
DCP	15%	15%	15%	15%	15%
DPS	15%	15%	15%	15%	15%
DS	30%	30%	30%	30%	30%
HET	35%	35%	35%	35%	35%
LAW	10%	10%	10%	10%	10%
MATH	35%	35%	35%	35%	35%
MP	30%	30%	30%	30%	30%
PLAN	25%	25%	25%	25%	25%
SOCSCI	20%	20%	20%	20%	20%
AAU Energy	15%	15%	15%	15%	15%
AAUHS	25%	25%	25%	25%	25%

Source: Pure

source: Pure